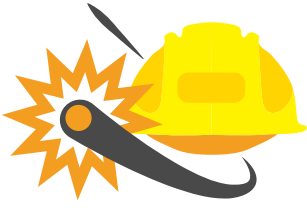
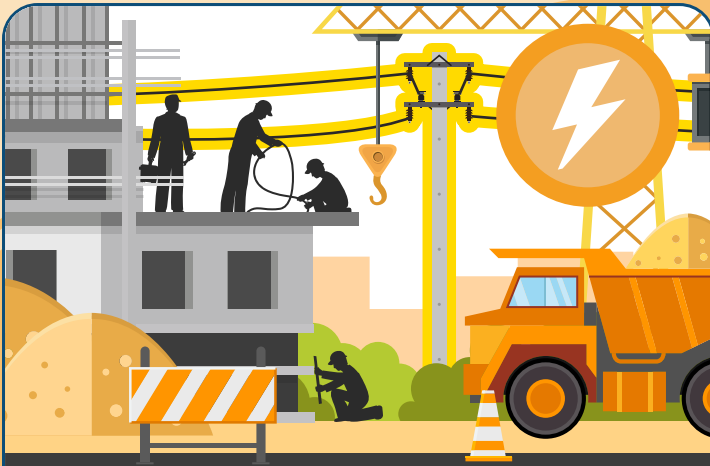


CONSTRUCTION SAFETY

CONSTRUCTION LABORER ELECTRICAL SAFETY



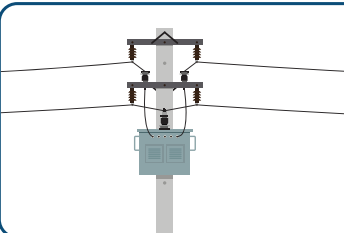
According to the Occupational Safety and Health Administration, **construction laborers have a high number of workplace electrical fatalities**. A total of **60%** of these fatalities occurred from **contact with overhead power lines**, while another **35%** are caused by **working on or near energized equipment or wires**. 70% of all worker electrical fatalities occur in non-electrical occupations.



60% of construction laborer workplace electrical fatalities occurred from **contact with overhead power lines**.



35% of construction laborer fatalities are caused by coming in **contact with energized equipment or parts**. Stay away from **energized equipment**.



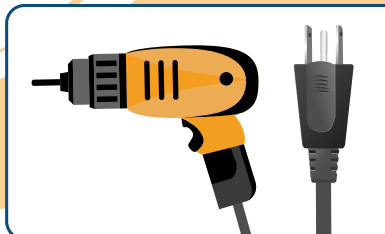
Locate and identify utilities, such as overhead power lines before starting work. **Call 811 before you dig**.



Look for overhead power lines when operating any equipment.



Always use **ground-fault protection**.



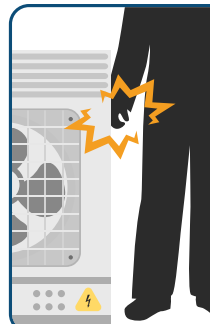
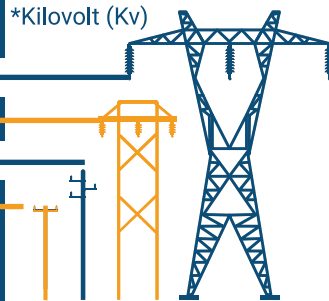
Do not operate portable electric tools unless grounded or double insulated.

Voltage Safe Distance

*Kilovolt (Kv)

500 Kv – 800 Kv	19 – 24 Ft
230 Kv – 362 Kv	13 – 16 Ft
41.1 Kv – 169 Kv	10 – 12 Ft
<50 v – 46 Kv	10 Ft

Know and maintain **safe distances** from power lines.



Be aware of energized equipment or parts near you. Many fatalities occur from workers **accidentally** coming in contact with energized equipment or parts near them.